

SUPERVISED VISITATION PROGRAM ANNUAL REPORT

Federal Fiscal Year 2021







TABLE OF CONTENTS

INTRODUCTION

Message from the Administrative Director of the Courts

Glenn A. Grant

4

SUPERVISED VISITATION STATISTICAL DATA

CLIENT INFORMATION

6

MARITAL STATUS PARTICIPANTS

8

SELF-REPORTED RACE/ETHNICITY

10

ADMINISTRATION OF THE PROGRAM

12

COMMUNITY INVOLVEMENT

13

HOW THE PROGRAM WORKS

14

ACCESS AND VISITATION GRANT

15

APPENDICES

Statistical Data

16

Access and Visitation Site List

23

MESSAGE FROM THE
ADMINISTRATIVE DIRECTOR
OF THE COURTS

•
GLENN A. GRANT



This annual report on New Jersey’s Supervised Visitation Program is submitted to the governor, the legislature, and the chief justice of the Supreme Court pursuant to [N.J.S.A. 2A:12-11](#). The Administrative Office of the Courts (AOC) prepared this report covering the period of Oct. 1, 2020 through Sept. 30, 2021. The report reflects data gathered from the visitation programs operated in the counties that are overseen by the AOC Family Practice Division.

In 1984, the legislature enacted the New Jersey Supervised Visitation Program (codified at [N.J.S.A. 2A:12-7 et seq.](#)), recognizing that “the inability of a parent to spend time with a child poses serious psychological problems to both the parent and child and prevents the growth of a normal, healthy relationship.” In evaluating the program, the legislature sought to preserve the benefits of bonding between the child and the absent parent while ensuring the safety and welfare of the child.

The New Jersey Judiciary has received federal access and visitation grant funds annually since 1997 to maintain the program. The grant funding is used for the establishment and/or continuation of programs that support and facilitate non-custodial parents’ access to and visitation with their children. The funds are distributed to the counties to fund their local programs based on need and the number of litigants served. Twenty of the 21 counties

participate in the funded program. While Bergen County does not participate in the program, the county provides county-funded visitation services.

The program offers supervised visitation and neutral exchange services by identifying safe facilities in local communities for visitations to take place and by enlisting and providing volunteers to monitor these often-difficult visits. Neutral exchange services encompass the supervision of the transfer of a child from one parent to another for the visitation. The supervision is limited to the exchanges.

The supervised visitation program is a component of the New Jersey Judiciary's effort to deliver effective services to children and parents.

Please note, beginning in March 2020, the COVID-19 pandemic adversely affected the access and visitation programs. Although limited services continued to be provided in-person and remotely, the impact of the pandemic is reflected in the reduced number of services captured below. For example, in 2019, 1,008 parties received services compared to 370 in 2020 and 220 in 2021.

Having both parents involved in the lives of their children has a positive impact on their development. Programs designed to increase non-custodial contact, such as supervised visitation, provide valuable opportunities to increase the child's social, emotional, and academic growth. These services also provide children with a safe, conflict-free environment.

The Judiciary will continue to foster effective communication and interaction between internal and external stakeholders in the supervised visitation process. The statewide program helps ensure the existence and application of effective standardized practices throughout the state with a focus on fairness and quality service, as well as the ongoing availability of needed visitation services.



GLENN A. GRANT

ADMINISTRATIVE DIRECTOR OF THE COURTS

SUPERVISED VISITATION
STATISTICAL DATA
CLIENT INFORMATION

The supervised visitation program aims to provide services that support and facilitate non-custodial parents' access to and time with their children. Some of the allowable services outlined in the statute involve the participation of both parents.

As depicted in Chart A, of the 220 parents or guardians that received services, non-custodial fathers and custodial mothers represent the largest groups served at 28 percent each.



PROGRAM PARTICIPATION

CHART A

Fig. 1

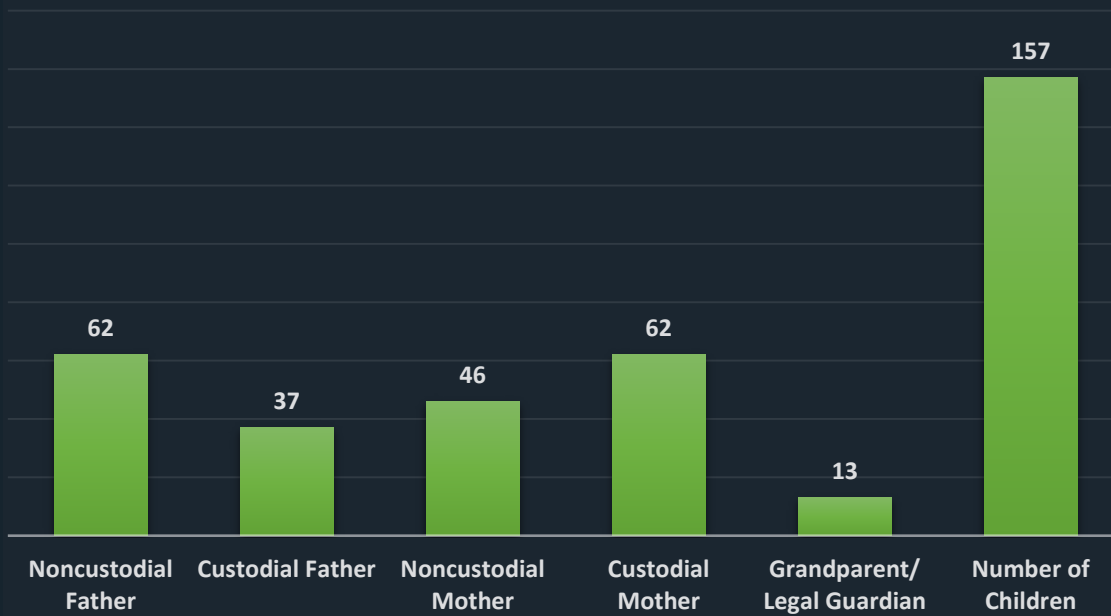
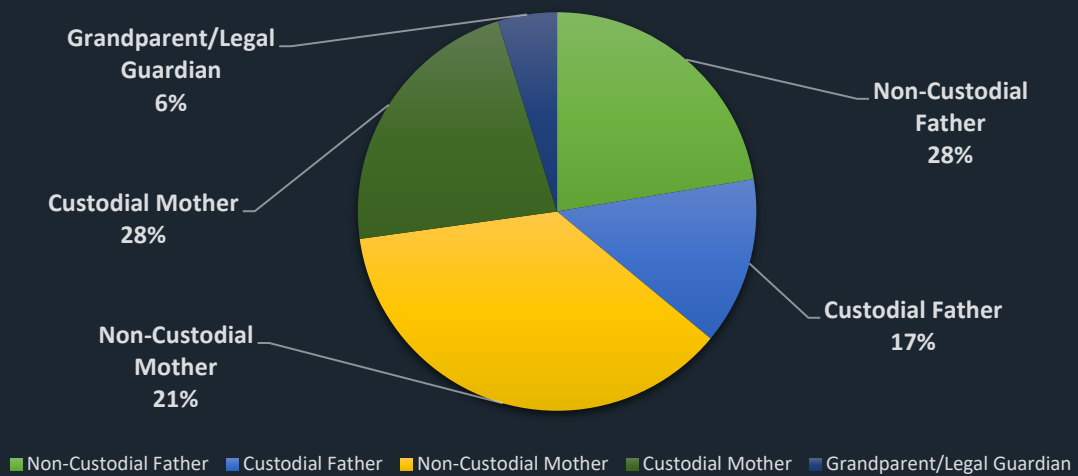


Fig. 2



SUPERVISED VISITATION
STATISTICAL DATA
**MARITAL STATUS
PARTICIPANTS**

Unmarried parents must often navigate multiple, and frequently overlapping, legal proceedings to resolve issues of child support and parenting time. The supervised visitation program can bridge this gap by offering a reasonable and affordable pathway for non-custodial parents to seek access to and parenting time with their children.

As depicted in Chart B , in the supervised visitation programs overseen by the Judiciary, 90 percent of parents were never married to the other parent.



MARITAL STATUS OF PARTICIPANTS

CHART B

Fig. 1

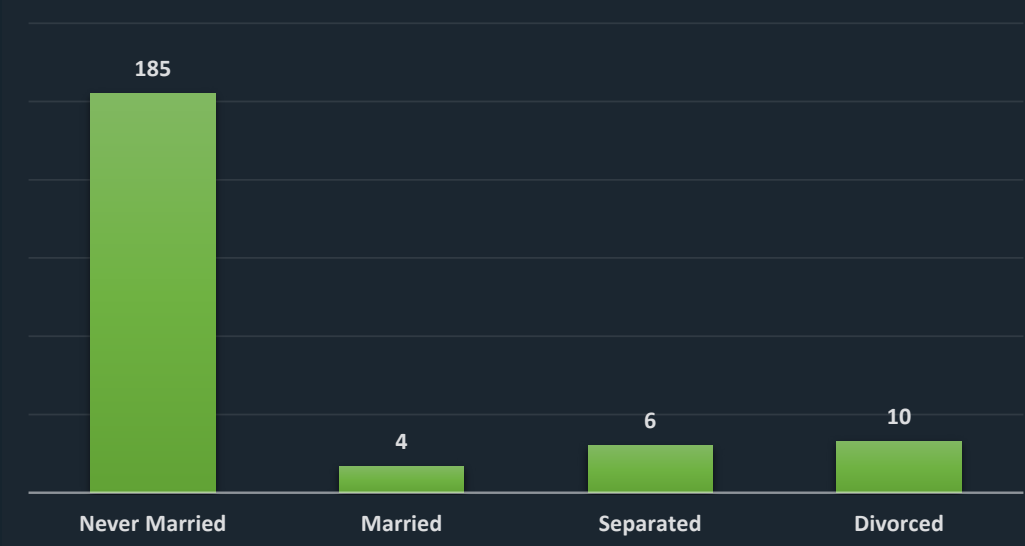
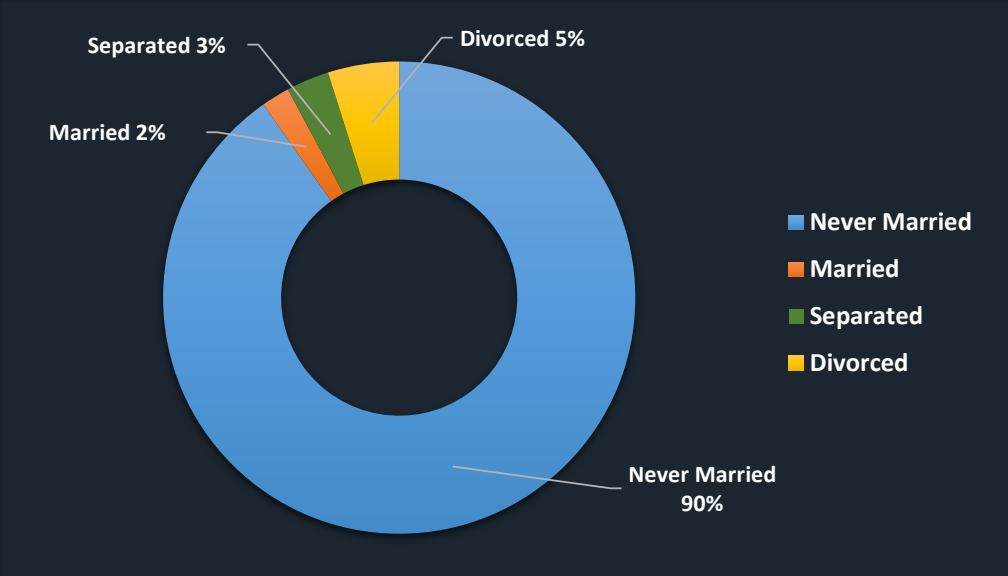


Fig. 2



SUPERVISED VISITATION
STATISTICAL DATA
**SELF-REPORTED
RACE/ETHNICITY**

Most participating parents self-identify as belonging to one of three racial or ethnic groups: white, Black/African American, and Hispanic or Latino.

Of the 220 parties that received services, the data revealed that white parents constituted 54 percent of the supervised visitation caseload, Hispanic or Latino constituted 21 percent, and Black/African Americans accounted for 21 percent of the total caseload. The remaining 4 percent of participants self-identified among the following racial groupings: American Indian, Alaska Native, Asian American, Native Hawaiian or Pacific Islander, two or more races, or other/data not reported.



SELF-REPORTED RACE/ETHNICITY

CHART C

Fig. 1

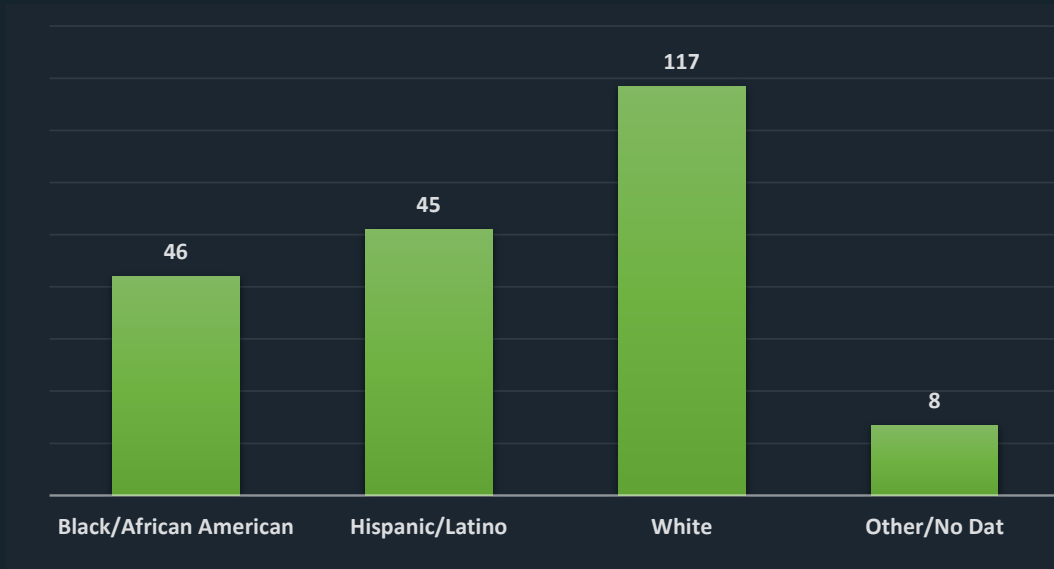
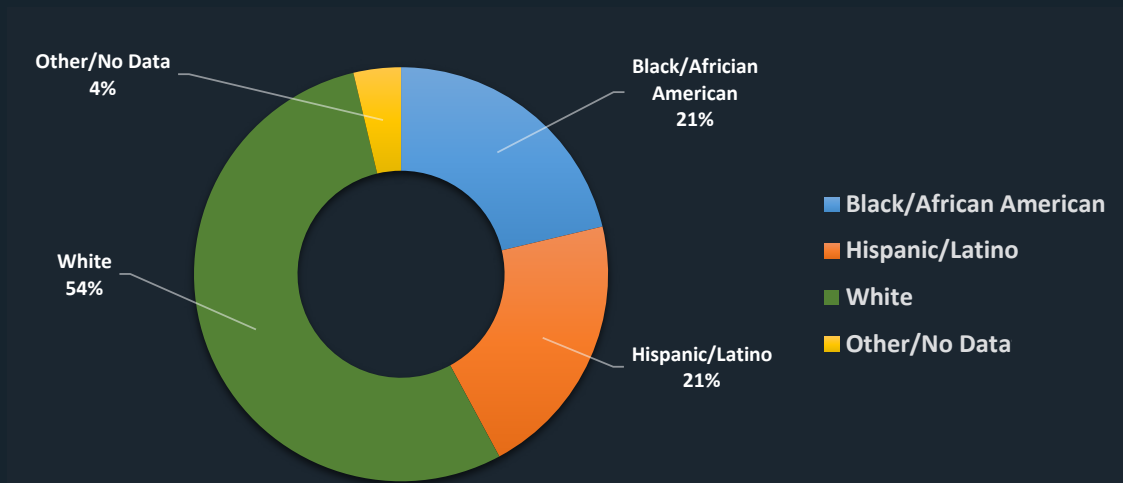


Fig. 2



ADMINISTRATION OF THE PROGRAM

The following is a description of the New Jersey Judiciary's Supervised Visitation Program.



ADMINISTRATOR

N.J.S.A. 2A:12-7 et seq. designates the administrative director of the courts as the administrator of the program. The legislation sets forth the specific duties and responsibilities of the administrator, which includes arranging for technical assistance to program coordinators in the counties.

STATE COORDINATOR

The state coordinator of the program, as part of the staff of the Administrative Office of the Courts, serves as the program's statewide manager, ensuring its compliance with the legislation, court rules and the procedures manual. The state coordinator also provides technical assistance to the counties.

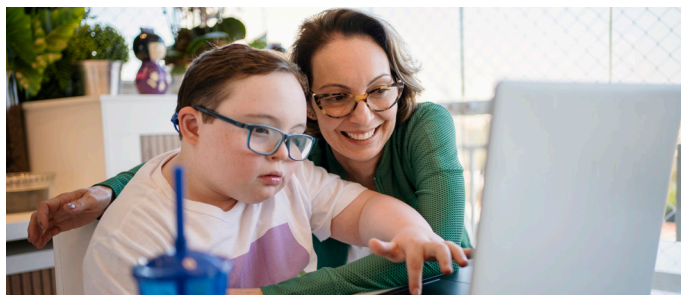
COUNTY COORDINATORS

In each county, a supervised visitation program county coordinator (hereafter referred to as county coordinator) manages the program at the local or Superior Court level, reviews all cases referred for program participation, schedules sites and volunteers to meet visitation schedules, and submits statistical data to the state coordinator. The county coordinator ensures that the screening, training, supervising, and managing of all staff and volunteers in the program comply with approved standards. County coordinators report matters specific to the program to the vicinage family division manager. (Note: Bergen County is the only county that does not participate in the funded program. However, it also must report matters specific to the program to the vicinage family division manager.)



COMMUNITY INVOLVEMENT

The program depends on the involvement of the community in providing this critically needed service, both in terms of volunteers and community sites.



VOLUNTEERS

Volunteers are a key component of the program. Volunteers provide supervision not only during the day, but also during evenings and weekends so that visitation can occur at times convenient to the families. The volunteers serve as neutral observers, ensuring the safety of the child. They intervene only when necessary.

All volunteers must complete a training course before beginning supervision. The county coordinators conduct the training under the oversight of and with technical assistance from the Administrative Office of the Courts.

COMMUNITY SITES

Community sites make the program possible by donating the use of their facilities for the visitations. Pursuant to [N.J.S.A. 2A:12-7 et seq.](#), the administrative director of the courts must approve all external sites. Sites must be accessible, functional, comfortable, and safe.



HOW THE PROGRAM WORKS



REFERRAL BY THE COURT TO THE COUNTY COORDINATOR

The court refers matters to the program. Referral is appropriate in dissolution, non-dissolution, or domestic violence cases where the court is concerned about the physical or emotional welfare of the child and after third-party supervision provisions have been exhausted. Additionally, domestic violence cases awaiting parenting time questionnaires can be referred to the program.

PRE-SCREENING INTERVIEW

The court refers matters to the program. Referral is appropriate in dissolution, non-dissolution, or domestic violence cases where the court is concerned about the physical or emotional welfare of the child and after third-party supervision provisions have been exhausted. Additionally, domestic violence cases awaiting parenting time questionnaires can be referred to the program.



COURT ORDER

The court order should clearly state the duration of supervised visitation, the length of visits, the names of the individuals permitted to attend the visitation, and a date to return to court for determining whether supervision should continue.

ROLE OF THE OBSERVER IN THE VISITATION

The court order should clearly state the duration of supervised visitation, the length of visits, the names of the individuals permitted to attend the visitation, and a date to return to court for determining whether supervision should continue.

HOW THE PROGRAM WORKS

“

Having both parents involved in the lives of their children has a positive impact on their development.

”

GLENN A. GRANT

ADMINISTRATIVE DIRECTOR OF THE COURTS



Since 1997, the New Jersey Judiciary has been the recipient of federal access and visitation grant funds to sustain the program. The grant requires the funds be used by the states to establish and/or continue programs to support and facilitate non-custodial parents' access to and visitation with their children.

In Federal Fiscal Year 2021, the New Jersey Judiciary received \$154,679.00 in funds through the federal access and visitation grant. These funds are allocated to the counties based on need and number of children and parents served.

APPENDIX A STATISTICAL DATA

This data is required to be reported annually to the Office of Child Support Enforcement (OCSE), Administration for Children and Families, U.S. Department of Health and Human Services.

Note: *These appendices reflect data only on the twenty counties that accept Program funds. Bergen County provides visitation services with county funds. These are not included in this data.*

In addition, please note, Bergen County does not participate in the program.

TABLE 1

NEW CASES

This chart reflects the number of new cases added to the program in Federal Fiscal Year 2021.

County	New Cases
Atlantic	26
Burlington	13
Camden	1
Cape May	1
Cumberland	0
Essex	4
Gloucester	12
Hudson	0
Hunterdon	0
Mercer	8
Middlesex	19
Monmouth	0
Morris	1
Ocean	5
Passaic	6
Salem	0
Somerset	0
Sussex	33
Union	0
Warren	0
Total	129

TABLE 2

CLIENT INFORMATION

This chart reflects the visitation participants in each county and their relationship to the child.

County	Non-Custodial Parent Father	Custodial Parent Father	Non-Custodial Parent Mother	Custodial Parent Mother	Grandparent/ Legal Guardian	Children in Common
Atlantic	16	8	10	14	4	42
Burlington	10	3	4	9	0	18
Camden	1	0	0	1	0	1
Cape May	1	0	0	1	0	1
Cumberland	0	0	0	0	0	0
Essex	3	1	1	3	0	4
Gloucester	5	6	5	7	1	18
Hudson	0	0	0	0	0	0
Hunterdon	0	0	0	0	0	0
Mercer	2	2	4	4	4	11
Middlesex	0	0	0	0	0	0
Monmouth	0	0	0	0	0	0
Morris	1	0	0	1	0	1
Ocean	3	2	2	3	0	13
Passaic	5	1	1	5	0	8
Salem	0	0	0	0	0	0
Somerset	0	0	0	0	0	0
Sussex	15	14	19	14	4	40
Union	0	0	0	0	0	0
Warren	0	0	0	0	0	0
Total	62	37	46	62	13	157

TABLE 3

MARITAL STATUS*

This chart reflects the number of visitation participants in each county within the stated categories at the time of entering the program.

*This data includes both civil unions and domestic partnerships.

County	Never Married to Each Other	Married to Each Other	Separated from Each Other	Divorced from Each Other	Data Not Reported
Atlantic	36	4	0	8	0
Burlington	24	0	2	0	0
Camden	2	0	0	0	0
Cape May	2	0	0	0	0
Cumberland	0	0	0	0	0
Essex	8	0	0	0	0
Gloucester	23	0	0	0	0
Hudson	0	0	0	0	0
Hunterdon	0	0	0	0	0
Mercer	8	0	4	0	0
Middlesex	0	0	0	0	0
Monmouth	0	0	0	0	0
Morris	2	0	0	0	0
Ocean	8	0	0	2	0
Passaic	10	0	0	2	0
Salem	0	0	0	0	0
Somerset	0	0	0	0	0
Sussex	62	0	0	0	0
Union	0	0	0	0	0
Warren	0	0	0	0	0
Total	185	4	6	12	0

TABLE 4

PARTICIPANT ANNUAL INCOME

This chart reflects the number of visitation participants in each county that voluntarily identify as having an income within the stated range.

County	Less Than \$10,000	\$10,000 - \$19,999	\$20,000 - \$29,999	\$30,000 - \$39,999	\$40,000 and above	Data Not Reported
Atlantic	0	4	5	3	2	38
Burlington	3	9	4	5	0	5
Camden	0	0	0	0	0	2
Cape May	0	0	0	0	0	2
Cumberland	0	0	0	0	0	0
Essex	2	0	0	1	3	2
Gloucester	0	0	0	0	0	24
Hudson	0	0	0	0	0	0
Hunterdon	0	0	0	0	0	0
Mercer	2	0	1	2	2	9
Middlesex	0	0	0	0	0	0
Monmouth	0	0	0	0	0	0
Morris	1	0	0	0	1	0
Ocean	0	0	0	0	0	10
Passaic	0	0	0	0	0	12
Salem	0	0	0	0	0	0
Somerset	0	0	0	0	0	0
Sussex	0	0	0	0	0	66
Union	0	0	0	0	0	0
Warren	0	0	0	0	0	0
Total	8	13	10	11	8	170

TABLE 5

RACE/ ETHNICITY

This chart reflects the number of visitation participants in each county that voluntarily self-identify as the stated race/ethnicity.

County	American Indian/ Alaska Native	Asian	Black / African American	Hispanic or Latino	Native Hawaiian/ Pacific Islander	White	Two or More Races	Data Not Reported
Atlantic	0	0	8	16	0	25	3	0
Burlington	0	0	10	1	0	14	1	0
Camden	0	0	0	1	0	1	0	0
Cape May	0	0	0	0	0	2	0	0
Cumberland	0	0	0	0	0	0	0	0
Essex	0	0	2	5	0	1	0	0
Gloucester	0	0	14	1	0	9	0	0
Hudson	0	0	0	0	0	0	0	0
Hunterdon	0	0	0	0	0	0	0	0
Mercer	0	1	6	2	0	6	0	1
Middlesex	0	0	0	0	0	0	0	0
Monmouth	0	0	0	0	0	0	0	0
Morris	0	0	0	1	0	1	0	0
Ocean	0	0	1	0	0	7	0	2
Passaic	0	0	3	6	0	3	0	0
Salem	0	0	0	0	0	0	0	0
Somerset	0	0	0	0	0	0	0	0
Sussex	0	0	2	12	0	48	0	4
Union	0	0	0	0	0	0	0	0
Warren	0	0	0	0	0	0	0	0
Total	0	1	46	45	0	117	4	7

TABLE 6

SERVICES PROVIDED

This chart reflects the number of visits funded through the access and visitation grant.

County	Supervised Visitation
Atlantic	53
Burlington	27
Camden	3
Cape May	3
Cumberland	0
Essex	9
Gloucester	49
Hudson	0
Hunterdon	0
Mercer	33
Middlesex	0
Monmouth	0
Morris	3
Ocean	11
Passaic	13
Salem	0
Somerset	0
Sussex	67
Union	0
Warren	0
Total	271

TABLE 7

CHILD SUPPORT CASES

This chart reflects the number of parties in the program that voluntarily identified as receiving or paying a child support.

County	Non-Custodial Parent Father	Custodial Parent Father	Non-Custodial Parent Mother	Custodial Parent Mother	Grandparent/ Legal Guardian
Atlantic	15	6	9	14	4
Burlington	10	0	3	0	0
Camden	1	0	0	1	0
Cape May	1	0	0	1	0
Cumberland	0	0	0	0	0
Essex	3	1	1	0	0
Gloucester	5	4	5	6	1
Hudson	0	0	0	0	0
Hunterdon	0	0	0	0	0
Mercer	2	1	3	2	4
Middlesex	0	0	0	0	0
Monmouth	0	0	0	0	0
Morris	1	0	0	1	0
Ocean	0	0	0	0	0
Passaic	5	1	0	5	0
Salem	0	0	0	0	0
Somerset	0	0	0	0	0
Sussex	15	14	18	15	4
Union	0	0	0	0	0
Warren	0	0	0	0	0
Total	58	27	39	45	13

APPENDIX B
**SUPERVISED VISITATION
SITE LIST**

County	Contact Information
Atlantic	<p>Atlantic County Civil Courts Building 1201 Bacharach Blvd., Second Floor Atlantic City, NJ 08401 609-402-0100 ext. 47570</p> <p>The Alcove Center for Grieving Children and Families Kristen Raring, executive director 319 E. Jimmie Leeds Rd., Suite 225 Galloway, NJ 08205 609-484-1133 ext. 103</p>
Bergen	<p>Division of Family Guidance One Bergen County Plaza, Second Floor Hackensack, NJ 07601 201-336-7398</p>
Burlington	<p>Catholic Charities (open Saturdays) Amilia Gallagher, supervising monitor 115 W. Pearl St. Burlington, NJ 08016 609-394-5157</p> <p>The Fatherhood Connection (open Tuesdays, Wednesdays and Thursdays) Tashon Jackson, director 429 John F. Kennedy Way Willingsboro, NJ 08046 609-877-1076</p>
Camden	<p>Camden County Hall of Justice Rafael Mendez, program coordinator 101 S. Fifth St. Camden, NJ 08103 856-650-9100 ext. 43516</p>
Cape May	<p>Family Matters, LLC Patricia Campbell, director 899 Bayshore Rd. Villas, NJ 08251 609-886-8666</p>
Cumberland	<p>Cumberland County Courthouse Daniza Molina, program coordinator P.O. Box 866 Bridgeton, NJ 08302 856-878-5050 ext. 15637</p> <p>United Advocacy Group Hope House 759 Lincoln Ave. Pitman, NJ 08071</p>
Essex	<p>Essex County (Veterans) Courthouse Gloria Brown, program coordinator 50 W. Market St. Newark, NJ 07102 973-776-9300 ext. 55521</p>
Gloucester	<p>Gloucester County Courthouse Chastity Robinson, program coordinator 70 Hunter St. Woodbury, NJ 08096 856-878-5050 ext. 15548</p> <p>(open Wednesday evenings and during court hours)</p>
Hudson	<p>Hudson County Administration Building Rosanne Lomolino, program coordinator 595 Newark Ave., Room 218 Jersey City, NJ 07306 201-748-4400 ext. 60572</p>
Hunterdon	<p>Safe Harbor Child Access Centers Carol Dvoor, president/director 171 Main St., Second Floor Flemington, NJ 08822 908-268-4284</p>

APPENDICES

County	Contact Information	
Mercer	Mercer County Civil Courthouse Johanny Hart, program coordinator 175 S. Broad St. Trenton, NJ 08690 609-571-4200 ext. 74384	El Centro (Catholic Charities) Robert Hernandez, director 327 S. Broad St. Trenton, NJ 08608 609-954-7487
Middlesex	Middlesex County Family Courthouse Kathy Fread, program coordinator 120 New St. New Brunswick, NJ 08903 732-645-4300 ext. 88609	
Monmouth	Monmouth County Courthouse Corinne Manson, program coordinator 71 Monument Park Freehold, NJ 07728 732-358-8700 ext. 87198	
Morris	Center for Evaluating and Counseling 1719 Route 10 East Parsippany, NJ 07054 973-829-6960	
Ocean	Ocean County Justice Complex Lisa Slavick, program coordinator 120 Hooper Ave/P.O. Box 2191 Toms River, NJ 08754 732-504-0700 ext. 64503	Preferred Behavioral Health Group Stacy M. Welch, program director 1200 River Ave. Lakewood, NJ 08701 732-905-5106 ext. 101
Passaic	Paterson YMCA Blanca Bravo, program coordinator 128 Ward St. Paterson, NJ 07505 973-247-8858	
Salem	Salem County Courthouse Angela Thomas, program coordinator P.O. Box 233 Salem, NJ 08079 856-878-5050 ext. 15881	
Somerset	Safe Harbor Child Access Centers Carol Dvoor, president/director 171 Main ST., Second Floor Flemington, NJ 08822 908-268-4284	
Sussex	Center for Evaluation and Counselling 1719 Route 10 East Parsippany, NJ 07054 973-829-6960	
Union	Union County Courthouse, New Annex Nancy Little, program coordinator 7 Elizabethtown Plaza Elizabeth, NJ 07207 908-787-1650 ext. 21314	
Warren	Safe Harbor Child Access Centers Carol Dvoor, president/director 171 Main St., Second Floor Flemington, NJ 08822 908-268-4284	



STUART RABNER

CHIEF JUSTICE

GLENN A. GRANT

ADMINISTRATIVE DIRECTOR OF THE COURTS

JENNIFER M. PEREZ

DIRECTOR, TRIAL COURT SERVICES

JOANNE M. DIETRICH

ASSISTANT DIRECTOR, FAMILY PRACTICE DIVISION

SEPTEMBER 2022